



LA 1088 CORRIDOR STUDY OPEN HOUSE PUBLIC HEARING



**STATE PROJECT NO. H.010116
FEDERAL AID PROJECT NO. H010116
ROUTE LA 1088
ST. TAMMANY PARISH, LOUISIANA**

St. Tammany Parish Council Chambers and Office
21490 Koop Drive
Mandeville, LA 70471
October 11, 2018
5:30 p.m. – 7:30 p.m.

Thank you for attending this Open House Public Hearing for proposed improvements to LA 1088, St. Tammany Parish, Louisiana. In this handout you will find information about the LA 1088 Corridor Study, the Preferred Build Alternative, project area maps on aerial photography, and typical cross sections. Also included is a comment form.

Project team members are stationed throughout the room to discuss the project and answer your questions. These individuals are easily identified by their name tags. Please take this opportunity to discuss the project with team members. **There will be no formal presentation.**

As you enter the room, you will see five stations:

Station 1: Sign-in Table

At this station, there are sign-in sheets for the General Public, Elected and Other Officials, Agency Personnel, and News Media. Please sign in on the appropriate sheet.

Station 2: Continuous PowerPoint Presentation

This short presentation provides an overview of the LA 1088 Corridor Study. The presentation lasts approximately 10 minutes and re-starts automatically after a one-minute intermission. **The continuous PowerPoint presentation and the exhibits shown tonight are available on the DOTD website at:**

http://wwwsp.dotd.la.gov/Inside_LaDOTD/Divisions/Engineering/Environmental/Pages/default.aspx

Station 3: Exhibits

This station consists of maps that illustrate the potential limits of construction super-imposed over aerial photographs, graphics of the typical design sections for the Preferred Alternative, and general information about the environmental impacts of the proposed project. Project team members are available to answer your questions about the proposed improvements to LA 1088.

Station 4: Real Estate Information

At this station, you will find information about the Louisiana Department of Transportation and Development (DOTD) Acquisition of Right-of-Way and Relocation Assistance Program, which is administered under Louisiana law in compliance with the federal laws outlined in the “Uniform Relocation Assistance Act” as amended. If you do not have the brochure explaining the Acquisition of Right-of-Way and Relocation Assistance Program, it is available at this station or you can obtain one from **District 62 Real Estate Office, 685 North Morrison, Hammond, LA 70401. Phone Number: (985) 375-0250.**

Station 5: Comment Table

At this station, comments can be made orally or in writing. A tape recorder is available at this table for oral comments. The last page of this handout is a comment form that you may use. Comments can be turned in at this hearing or mailed to the address on the back of the form. Additional comment forms are also available to be taken with you. **Please note that comments mailed after this hearing must be postmarked no later than October 21, 2018, to be included as part of the hearing transcript.**

We hope you will take advantage of this opportunity to provide input to the LA 1088 Corridor Study. Thank you for attending this hearing and for providing input.

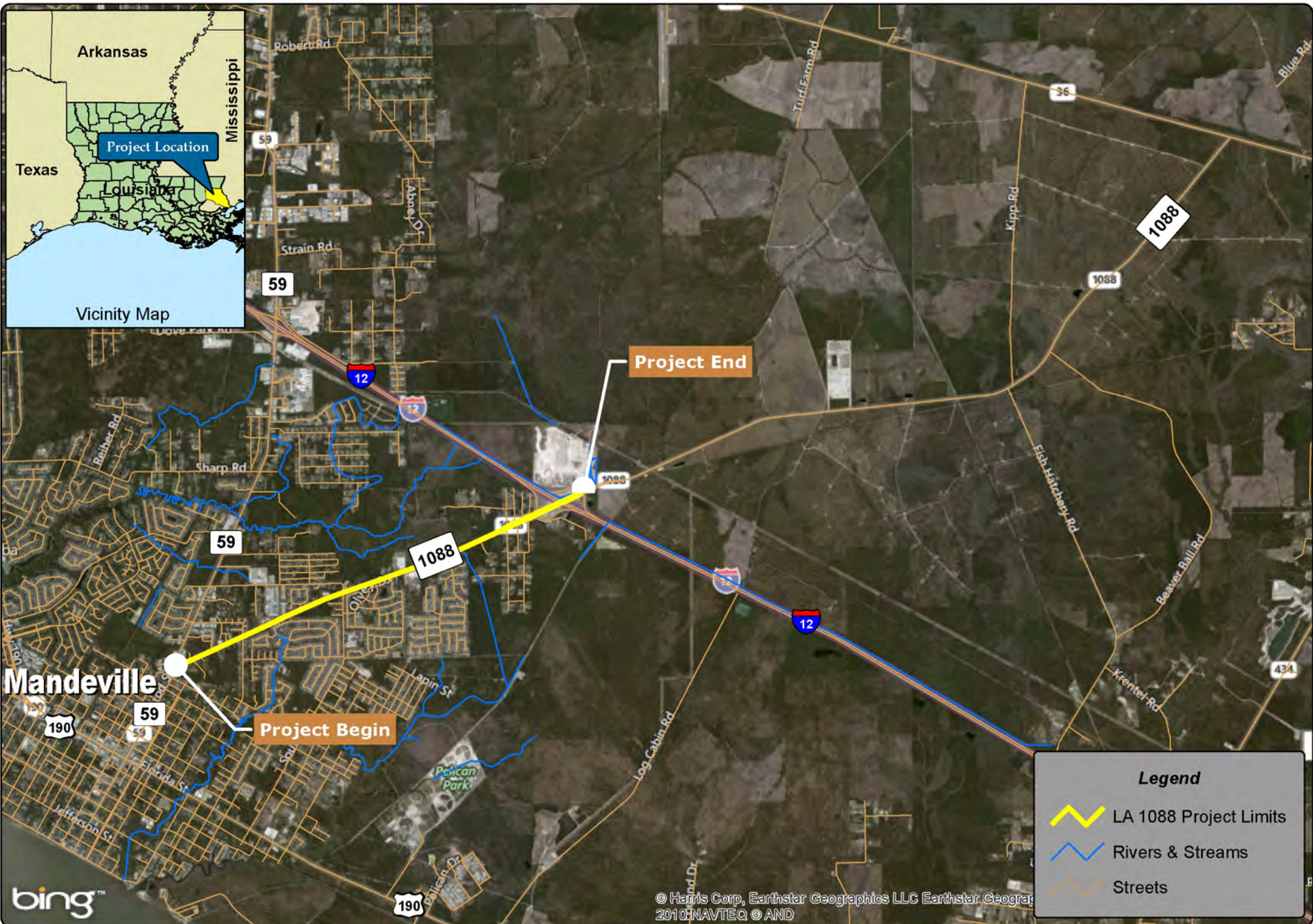
LA 1088 Corridor Study Description
State Project No. H.010116
Federal Aid Project No. H010116
Route LA 1088
St. Tammany Parish, Louisiana

The Louisiana Department of Transportation and Development (LADOTD) in cooperation with the Federal Highway Administration (FHWA) propose to make improvements to LA 1088, St. Tammany Parish Louisiana. The purpose of the proposed improvements is to reduce existing congestion and accommodate future traffic demands. LA 1088 is a suburban highway which runs generally in a northeasterly direction from the intersection of LA 59 north of Mandeville to an intersection at LA 36 east of Abita Springs. The proposed project improvements address vehicle, pedestrian, and bicycle traffic along the LA 1088 corridor between LA 59 and the I-12 interchange westbound ramps. The total length of the proposed project is approximately 3.5 miles (**Figure 1**).

As this project is anticipated to receive funding assistance from the FHWA, it is subject to the requirements of the National Environmental Policy Act (NEPA). As such an Environmental Assessment (EA) is being prepared in accordance with NEPA to determine if the proposed project will cause any significant environmental impacts. This Public Hearing is being held to seek comments on the EA. Comments received from the public hearing will be considered and responses will be included in the EA. After public comments are received and considered, a determination of the significance of the impacts is made. If it is determined that there will be no significant impacts a Finding of No Significant Impact (FONSI) will be prepared to conclude the process and document the decision. The EA is available for review on the LADOTD website referenced earlier in this handout.

Detailed evaluations included consideration of constructing roundabouts, highway widening, and the possibility of sidewalks and bike paths. A public involvement meeting was held for the project on July 23, 2015. The purpose of the public meeting was to update the public on the status of the studies, including the preparation of an EA, and seek public input on the proposed improvements to the LA 1088 corridor. A summary of the comments and responses are provided in the EA.

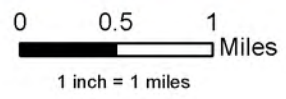
Based on the detailed evaluations and public input, the EA identifies a Preferred Alternative. The Preferred Alternative includes a new two-lane segment with roundabouts, a new median, four-foot shoulders and a sidewalk. It also includes a new four-lane divided section from west of Forest Brook Boulevard to the I-12 interchange with roundabouts replacing the interchange intersections and a sidewalk on both sides of the four-lane. Sidewalks or berms will also be added through all roundabouts in accordance with the LADOTD's *Roundabout Sidewalk Policy*. The Preferred Alternative incorporates the latest *LADOTD Design Guidelines and Complete Streets Policy*. Attached are aerial maps with an overlay of the Preferred Alternative, typical cross sections, and a table providing a summary of impacts based on studies to date.



bing™

© Harris Corp, Earthstar Geographics LLC Earthstar Geograph
2010 NAVTEQ © AND

VOLKERT



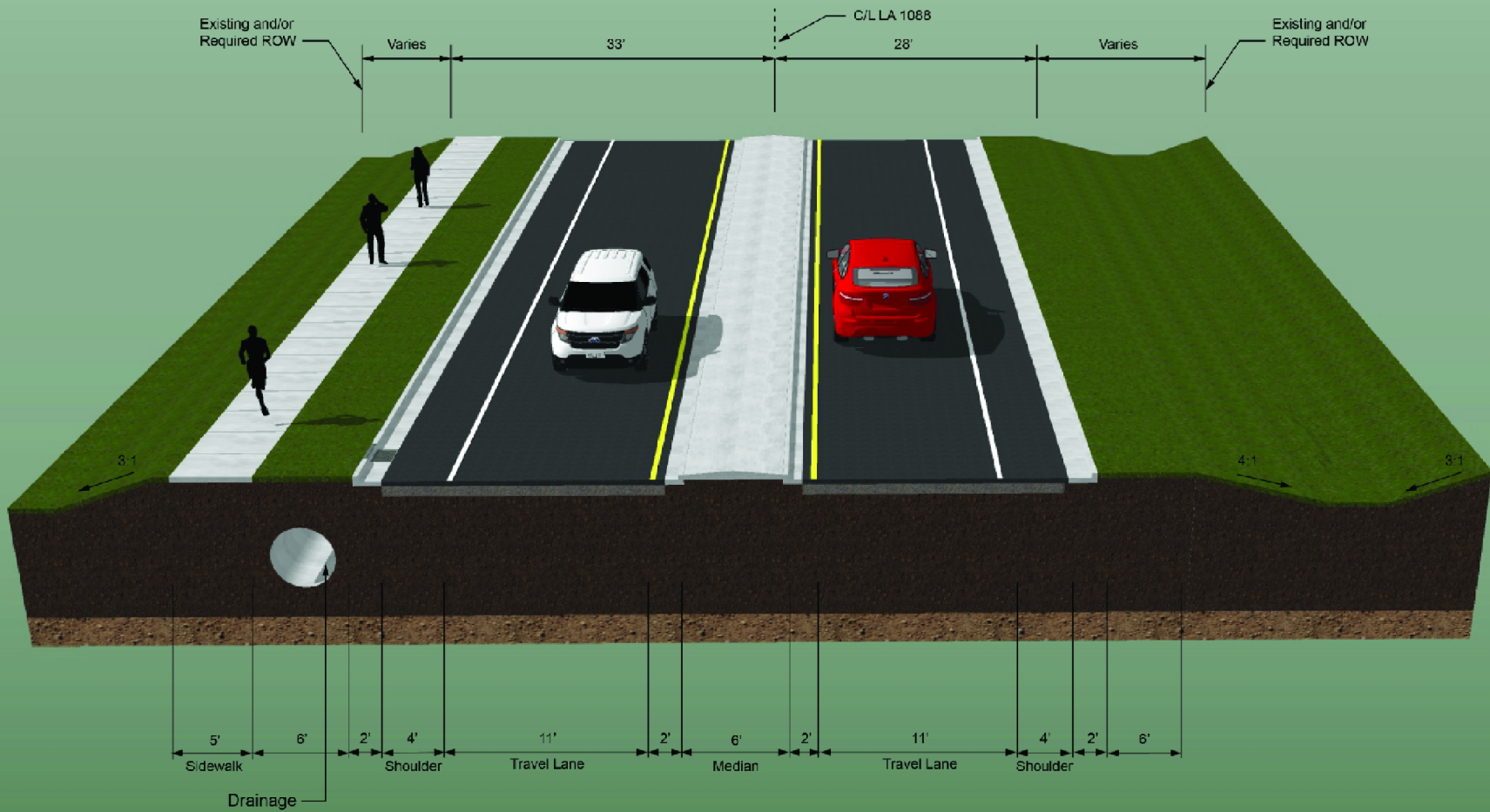
Note: This map is for presentation use only and not to be used for construction purposes.

**LA 1088 Corridor Study
St Tammany Parish
Figure 1 Location Map**

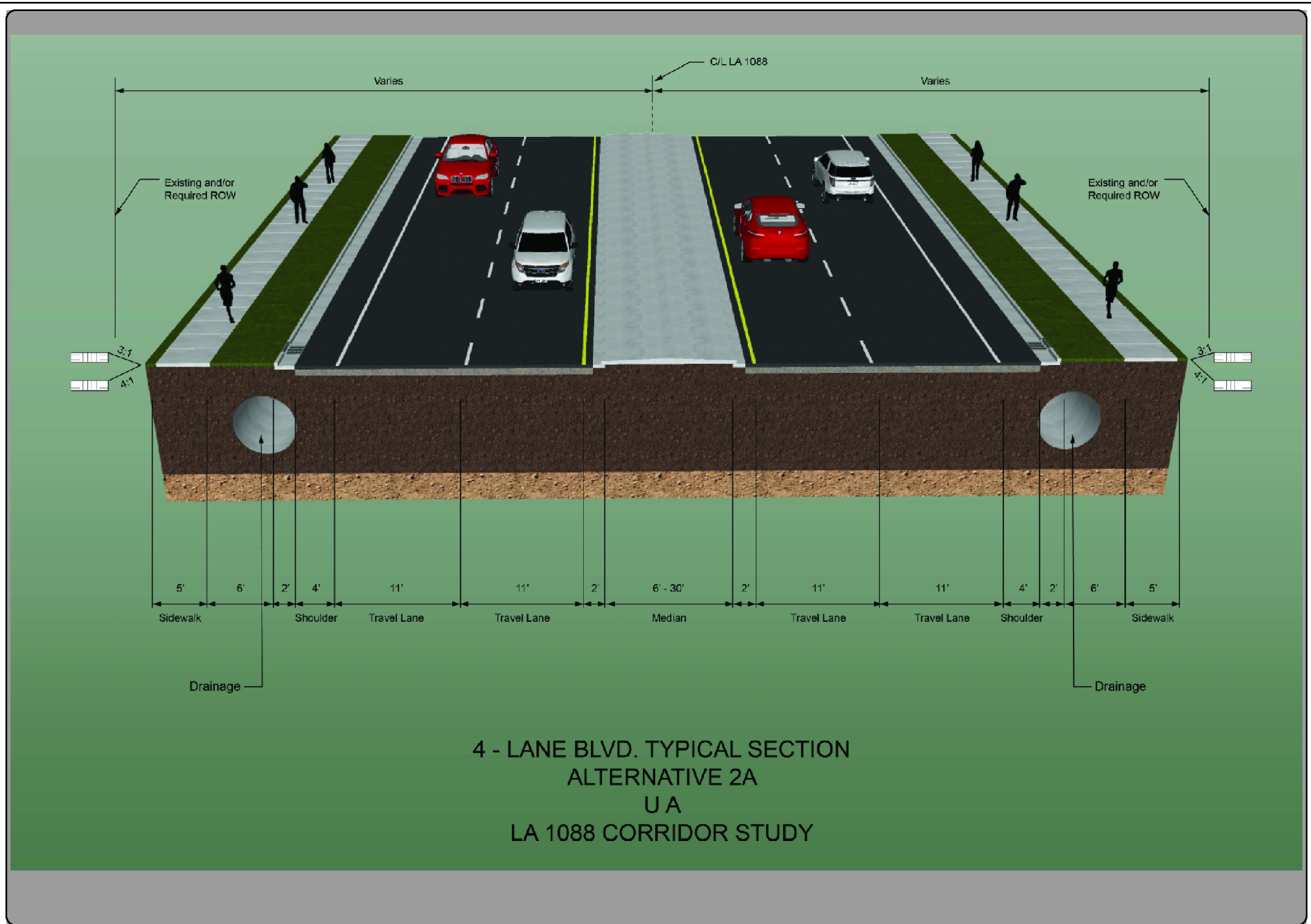
LA 1088 Improvements Summary of Impacts

FEATURE OR RESOURCE	PREFERRED ALTERNATIVE 2A
Real Estate / Additional Right-of-Way Required	Yes (9.9 acres)
Relocations	No
Cultural and Section 106 Resources	
Section 4(f) or 6(f) Properties	No
Historic Sites	No
Archeological Sites	No
Natural Resources	
Wetlands (Right-of-way) ¹	Yes (12.4 Acres)
Waters of the US (Streams in right-of way)	Yes (0.02Acre)
Other Waters of the US (Ditches in right-of-way)	Yes (6.1 Acres)
Endangered/Threatened Species/Habitat	No
Within 100- Year Floodplain ²	Yes (11.8Acres)
Within Coastal Zone ³	Yes
Coastal Barrier Island	No
Farmland	No
Sole Source Aquifer (Southern Hills Aquifer)	No
Natural or Scenic Stream	No
Navigable Waterway	No
Physical Impacts	
Noise ⁴	Yes
Air Quality ⁵	No Long-term
Water Quality ⁵	No Long-term
Hazardous sites	No
Water/oil/gas Well	No
Social Impacts	
Land Use Change	No
Title VI Environmental Justice	No
Hospitals, Medical Facilities, Fire, Police	No
Transportation Pattern Changes	No
Community Cohesion ⁶	No
Community Impact during Construction ⁷	Yes

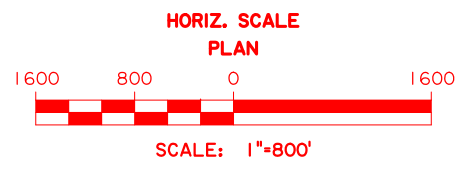
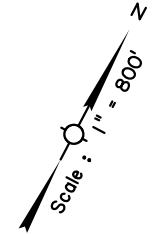
1. Preliminary determination of Wetlands within the existing and required right-of-way. Formal wetlands jurisdictional determination of acres will be made during permitting process
2. 100-year floodplain within the existing and required right-of-way as obtained from Flood Insurance Rate Maps (FIRMS) published by the Federal Emergency Management Agency (FEMA).
3. The project is located within the State Coastal Zone boundaries.
4. Based on Noise Analysis Technical Report.
5. Minor localized short-term during construction
6. Alternative 2A provides sidewalks and a four-foot shoulder which would enhance pedestrian mobility.
7. Considerations to reduce impacts include phased construction, construction times, detour routes, Construction Best Management Practices



ALTERNATIVE 2A
 UA
 2 - LANE BLVD. TYPICAL SECTION
 LA 1088 CORRIDOR STUDY



Source (Citation) for 2010 six inch pixel Imagery Area Mosaics
 This imagery was provided by the Louisiana Governor's Office of Homeland Security and Emergency Preparedness (GOHSEP) as the sole source owner, and is shared with Louisiana state government agencies in the interest of good government practices.
 Reproduction and distribution of the data is prohibited. Please refer any requests for data to the Deputy Director for Management, Finance and Interoperability of GOHSEP. This imagery was distributed by the Regional Planning Commission for Jefferson, Orleans, Plaquemines, St. Bernard and St. Tammany Parishes (RPC) with permission from GOHSEP.
 GOHSEP and the RPC are not responsible for any errors arising from any use of alterations made to the data. Under no circumstances is resale or distribution of the data permitted.
 Mosaics were produced by the RPC and subset for project areas as requested.
 Imagery Information: The red, green, blue (true color) and near infrared four-band aerial imagery was captured between February 2009 and April 17th 2010 (with flights for any corrections flown until April 28th, 2010) by Sandborn Map Company, Inc.
 The imagery is projected in UTM 18 NAD 83; unit of measure is meters.
 The spatial resolution is approximately 4 to 6m per pixel.
 Any use of the data must be accompanied with this citation and accompanying scale and logos embedded within.



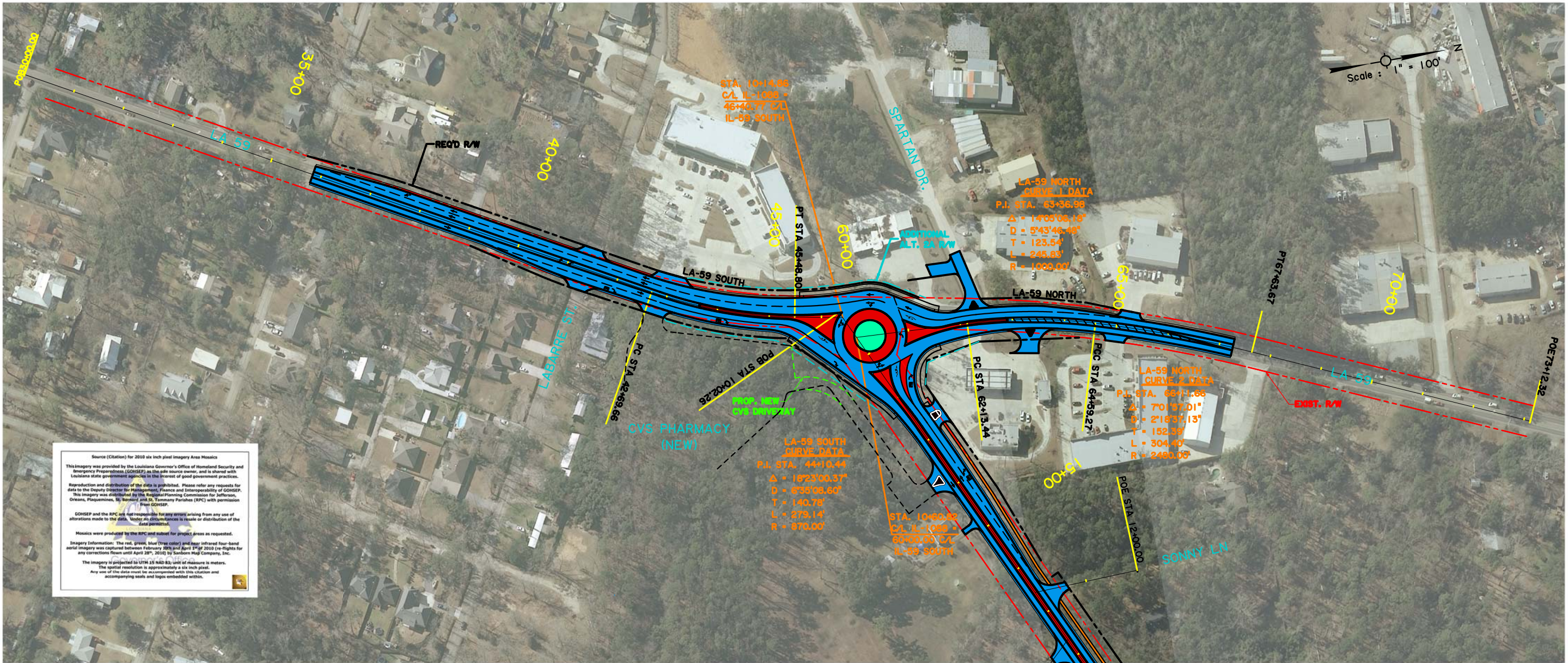
SHEET NUMBER		2
DESIGNED A. EVETT	PARISH	ST. TAMMANY
CHECKED K. ROTHERMEL	CONTROL SECTION	852-11
DETAILED J. DAVIS	STATE	H.010116
CHECKED A. EVETT	PROJECT	
REVIEWED	SERIES #	
BY	REVISION DESCRIPTION	DATE
NO.	DATE	BY

**BUILD ALTERNATIVE 2A
CONCEPT PLAN**

L.A 1088 CORRIDOR STUDY

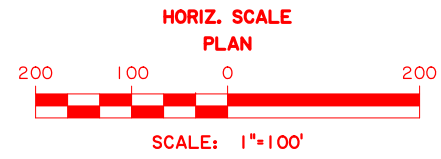
DOTD
Louisiana Department of Transportation and Development

VOLKERT



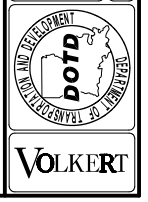
Source (Citation) for 2010 six inch grid Imagery Area Mexico
 This imagery was provided by the Louisiana Governor's Office of Homeland Security and Emergency Preparedness (GOHSEP) as the sole source owner, and is shared with Louisiana state government agencies in the interest of good government practice. Reproduction and distribution of this data is prohibited. Please refer any requests for data to the Deputy Director for Management, Finance and Interoperability of GOHSEP. This imagery was distributed by the Regional Planning Commission for Jefferson, Orleans, Plaquemine, St. Bernard and St. Tammany Parishes (RPC) with permission from GOHSEP.
 GOHSEP and the RPC are not responsible for any errors arising from any use of alterations made to the data. Under no circumstances is resale or distribution of the data permitted.
 Mexicos were produced by the RPC and subset for project areas as requested.
 Imagery Information: The red, green, blue (true color) and near infrared four-band aerial imagery was captured between February 2009 and April 17th 2010 (©-rights for any corrections from until April 28th, 2010) by Sanborn Map Company, Inc.
 The imagery is projected to UTM 13 NAD 83; unit of measure is meters.
 The spatial resolution is approximately a six inch grid.
 Any use of the data must be accompanied with this citation and accompanying data and logos embedded within.

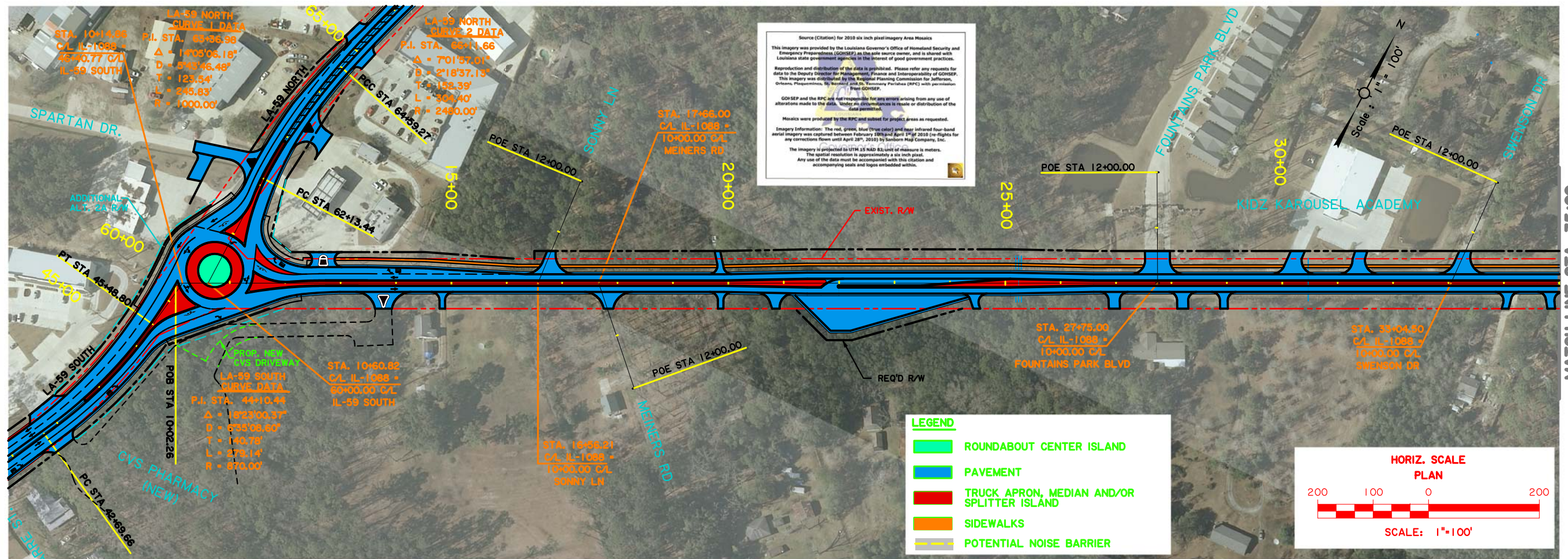
- LEGEND**
- ROUNDABOUT CENTER ISLAND
 - PAVEMENT
 - TRUCK APRON, MEDIAN AND/OR SPLITTER ISLAND
 - SIDEWALKS



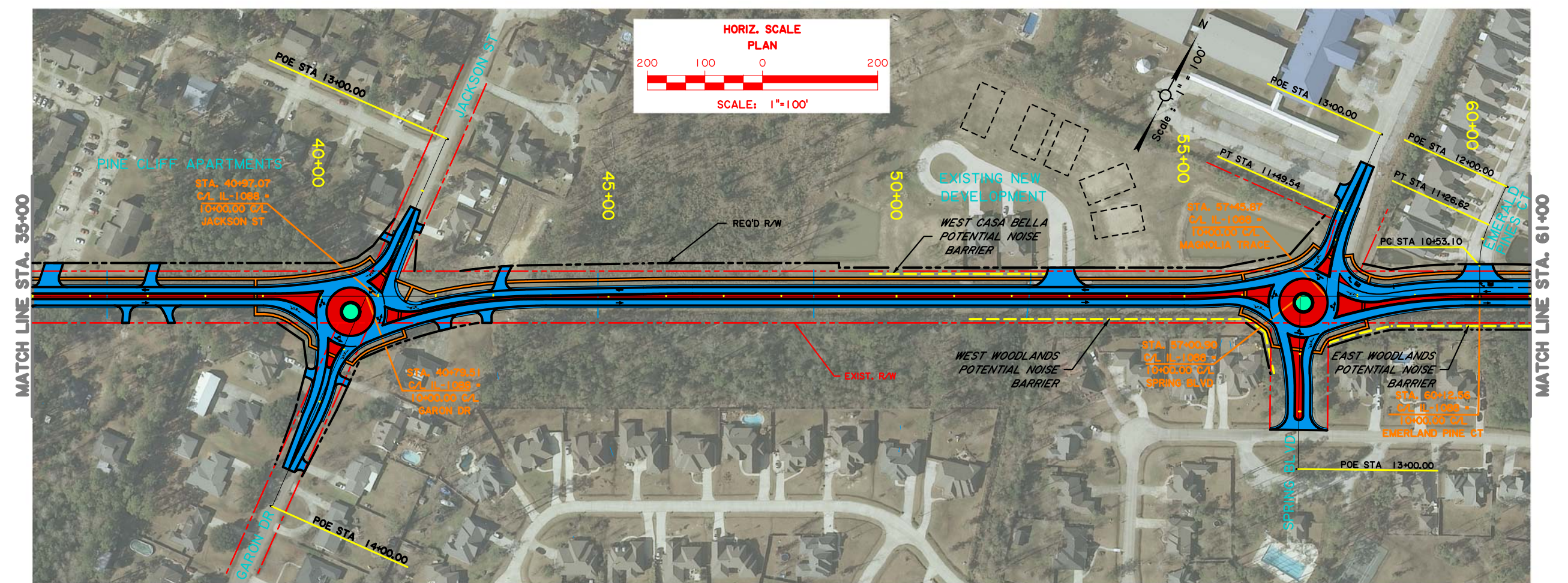
**BUILD ALTERNATIVE 2A
CONCEPT PLAN**

LA 1088 CORRIDOR STUDY





Source (Citation) for 2010 six inch pixel Imagery Area Mosaics
 This imagery was provided by the Louisiana Governor's Office of Homeland Security and Emergency Preparedness (GOSHEP) as the sole source owner, and is shared with Louisiana state government agencies in the interest of good government practices. Reproduction and distribution of the data is prohibited. Please refer any requests for data to the Deputy Director for Management, Finance and Interoperability of GOSHEP. This imagery was distributed by the Regional Planning Commission for Jefferson, Orleans, Plaquemine, St. Bernard and St. Tammany Parishes (RPMC) with permission from GOSHEP.
 GOSHEP and the RPMC are not responsible for any errors arising from any use of alterations made to the data. Under no circumstances is resale or distribution of the data permitted.
 Imagery Information: The red, green, blue (true color) and near infrared four band aerial imagery was captured between February 10th and April 1st of 2010 (re-flights for any corrections from until April 28th, 2010) by Sanborn Map Company, Inc. The imagery is projected to UTM 18 NAD 83 unit of measure in meters. The spatial resolution is approximately a six inch grid. Any use of the data must be accompanied with this citation and accompanying scale and logos embedded within.



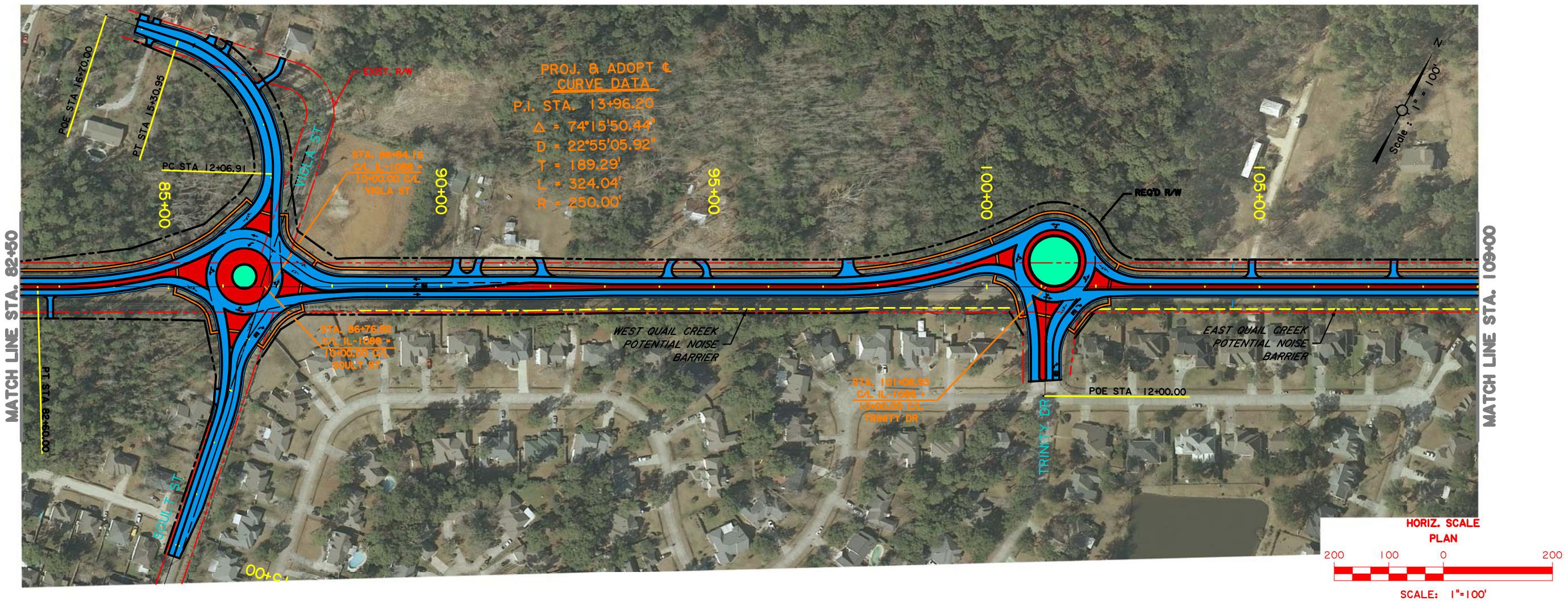
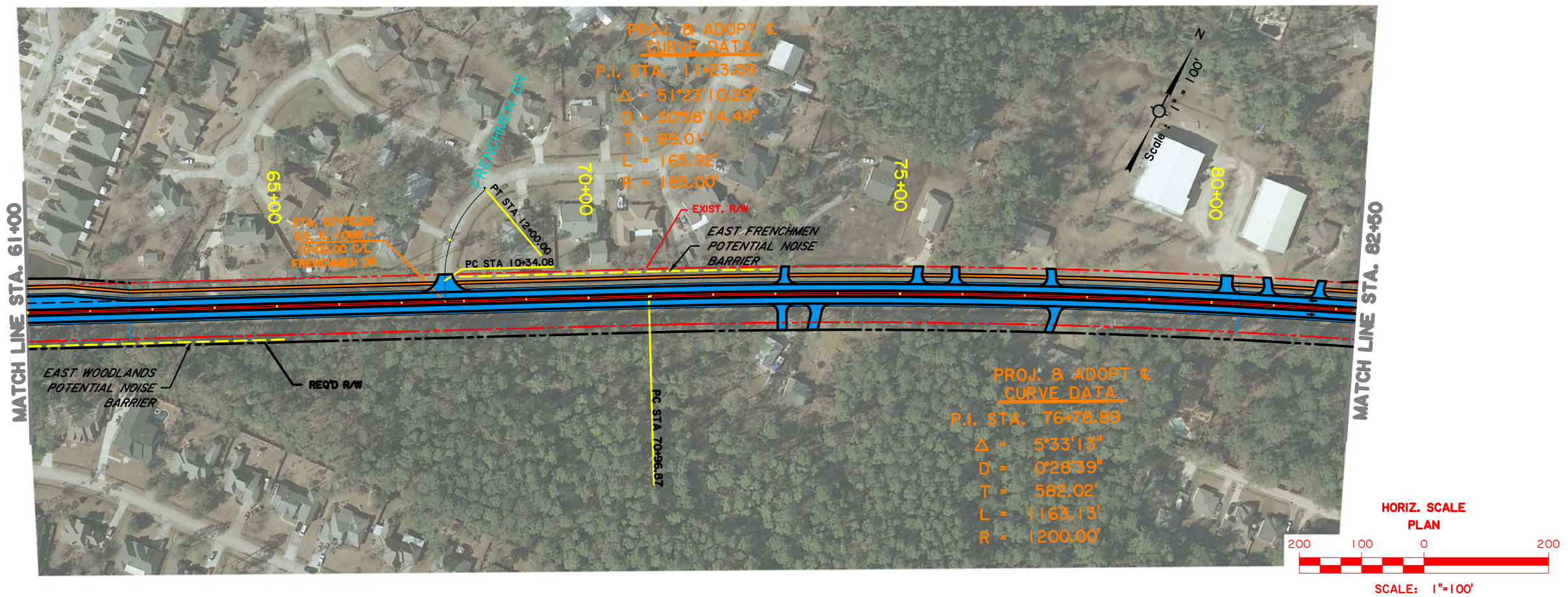
MATCH LINE STA. 35+00



MATCH LINE STA. 35+00

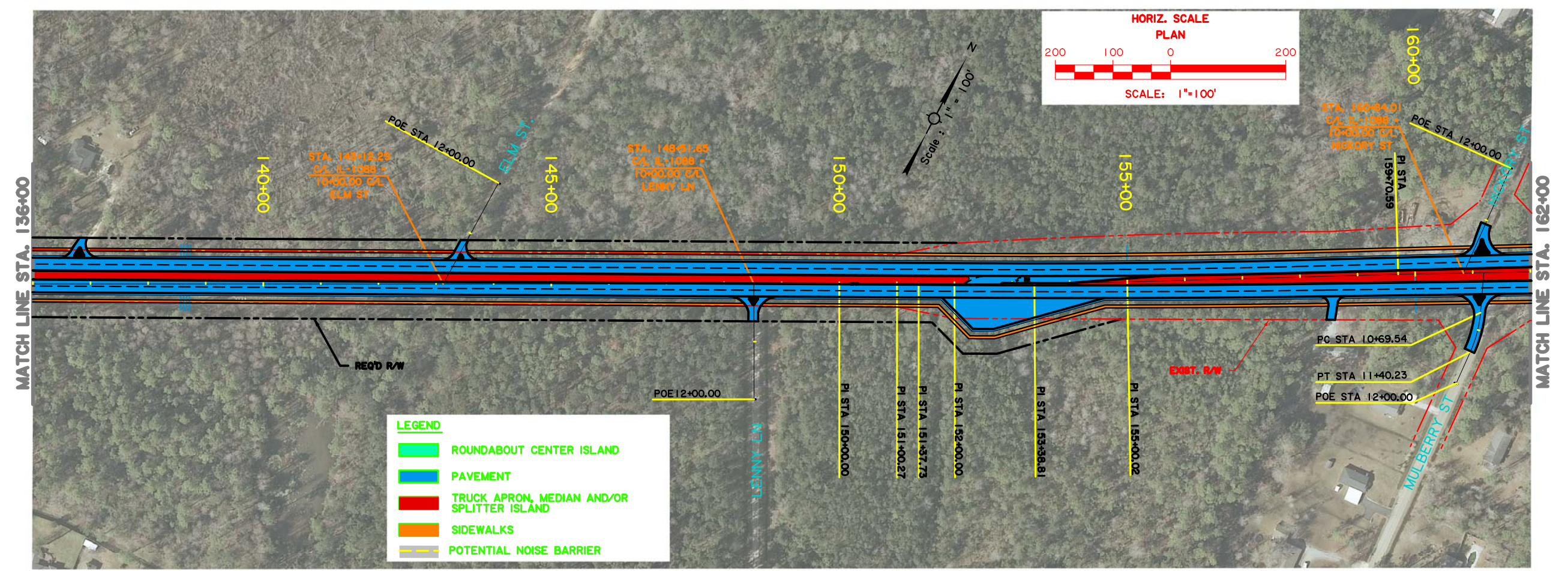
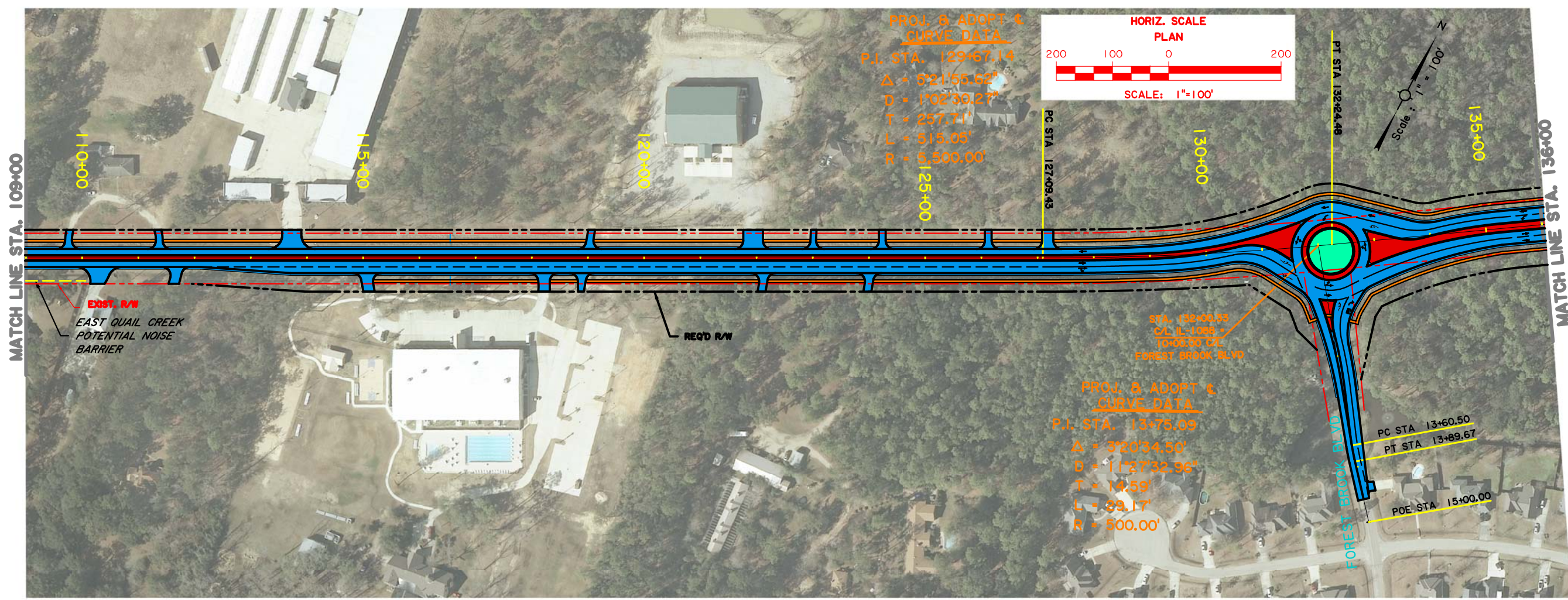
MATCH LINE STA. 61+00


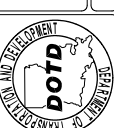

SHEET NUMBER	2-2
DESIGNED	A. EVETT
CHECKED	K. ROTHERMEL
PARISH	ST. TAMMANY
CONTROL SECTION	852-11
REVIEWED	J. DAVIS
STATE PROJECT	H.010116
BY	
REVISION DESCRIPTION	
NO.	DATE
BUILD ALTERNATIVE 2A CONCEPT PLAN	
LA 1088 CORRIDOR STUDY	

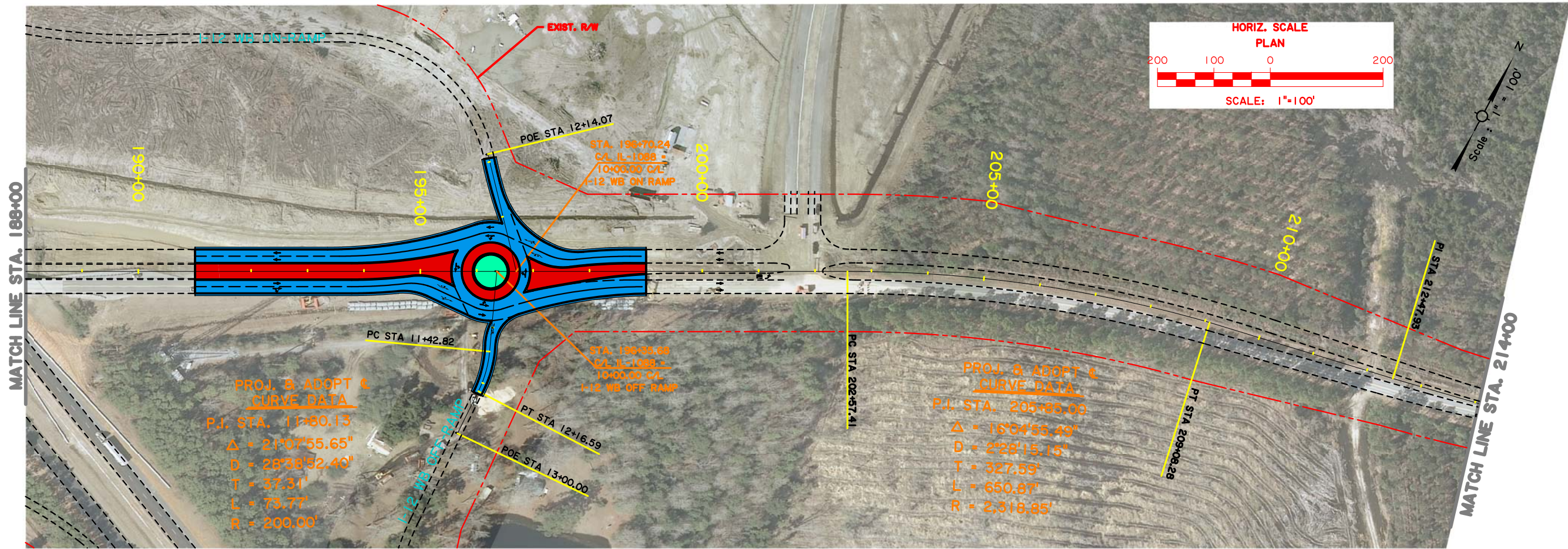
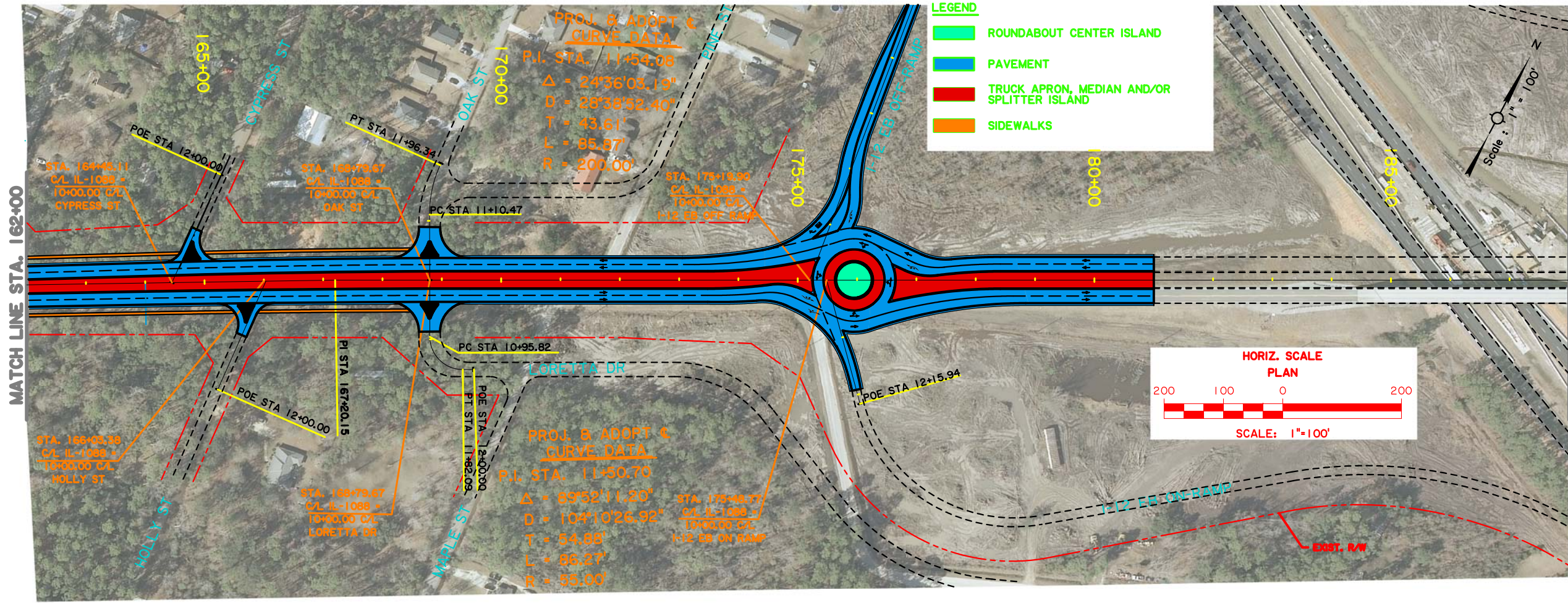
- LEGEND**
- ROUNDABOUT CENTER ISLAND
 - PAVEMENT
 - TRUCK APRON, MEDIAN AND/OR SPLITTER ISLAND
 - SIDEWALKS
 - POTENTIAL NOISE BARRIER






SHEET NUMBER	2-3
DESIGNED	A. EVETT
CHECKED	K. ROTHERMEL
REVIEWED	H. EVELITT
DATE	
NO.	
PARISH	ST. TAMMANY
SECTION	852-11
STATE	LA
PROJECT	H.010116
BY	
REVISION DESCRIPTION	
	
BUILD ALTERNATIVE 2A CONCEPT PLAN	
LA 1088 CORRIDOR STUDY	
	
VOLKERT	



SHEET NUMBER	2-4
DESIGNED	A. EVETT
CHECKED	K. ROTHERMEL
REVIEWED	J. DAVIS
DATE	
NO.	
BY	
REVISION DESCRIPTION	
PARISH	ST. TAMMANY
CONTROL SECTION	852-11
STATE PROJECT	H.010116
	
BUILD ALTERNATIVE 2A CONCEPT PLAN	
LA 1088 CORRIDOR STUDY	
	
	



SHEET NUMBER	2-5
DESIGNED	A. EVETT
CHECKED	K. ROTHERMEL
DATE	
REVISION DESCRIPTION	
NO.	
DATE	
BY	
PARISH	ST. TAMMANY
CONTROL SECTION	852-11
STATE PROJECT	H.010116
REVIEWED	J. DAVIS
CHECKED	A. EVETT
SERIES #	
 BUILD ALTERNATIVE 2A CONCEPT PLAN  LA 1088 CORRIDOR STUDY 	

**PUBLIC HEARING
STATE PROJECT NO.: H.010116
LA 1088 CORRIDOR STUDY
ST. TAMMANY PARISH, LOUISIANA**

Name:

Address (Street, Apt. #, City, State, Zip):

Telephone Number:

E-mail:

Interest in Project:

Property Owner/Tenant _____

Local Business Owner _____

Public Official _____

Other _____

Are you in favor of the project?

Yes []

No []

Please provide your comments/views on the proposed project/Environmental Assessment.

Please return this form to the registration desk or mail to the following address by October 21, 2018:

**Ms. Jan Evans
Volkert, Inc.
7967 Office Park Blvd.
Baton Rouge, LA 70809**

Fold Here Second and Tape Edge (DO NOT STAPLE)

Name _____

Place Stamp Here

Address _____

**Ms. Jan Evans
Volkert, Inc.
7967 Office Park Blvd.
Baton Rouge, Louisiana 70809**

Fold Here First